



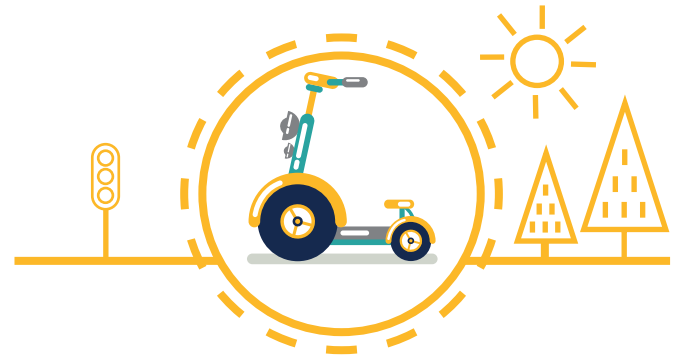
Are you planning to buy or import an electric vehicle?

Important to know

If you are planning to buy or import an electric vehicle, here are a few things you should know. Electric vehicles (L-category) include light powered vehicles, mopeds, motorcycles, quads and scooters with a seat and a speed exceeding 6 km/h.

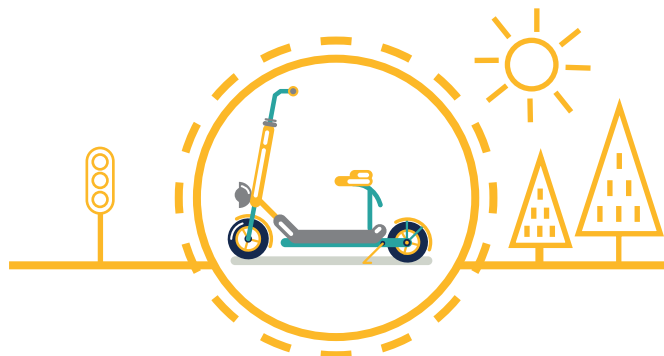
All L-category vehicles need a type-approval if they are **intended for use on public roads**. Type-approvals are granted by EU countries. The vehicle must comply with the requirements of Regulation (EU) No 168/2013

(available here: <https://eur-lex.europa.eu/>).



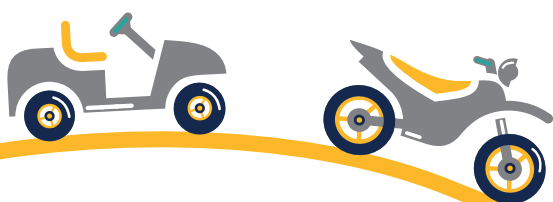
Before you buy or import an L-category vehicle, make sure it has a **vehicle identification number (VIN)**. The VIN must be visible on the vehicle's frame and statutory plate (see example below). The statutory plate must contain certain mandatory information. Requirements for the information are set in Regulation (EU) No 168/2013.

If you find a vehicle that interests you, you should contact the manufacturer for more specific information on the vehicle, such as its primary intended use, **statutory plate** and certificate of conformity.



Ask the national market surveillance authority how a "public road" is defined in your country. It can mean different things in different countries.

BIANCA SCOOTER LTD.
L1e-B
E6*168/2013*01223
5DRH123UPAX000001
90 dB(A) - 3750 min⁻¹



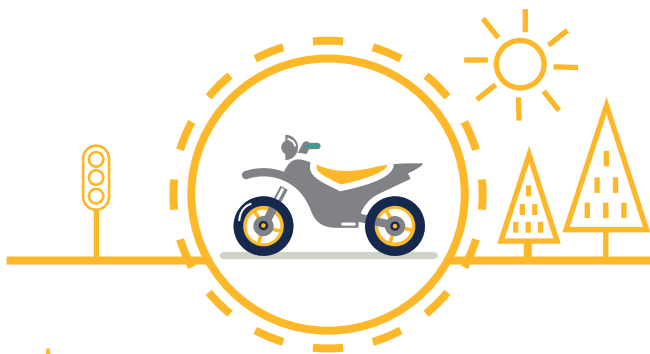
If you are buying a vehicle from a retailer or importer, check whether the vehicle information they give matches with the information on the manufacturer's website. Only the manufacturer can define the intended use of a vehicle, not the retailer or importer.

* Here is the place for your flag!

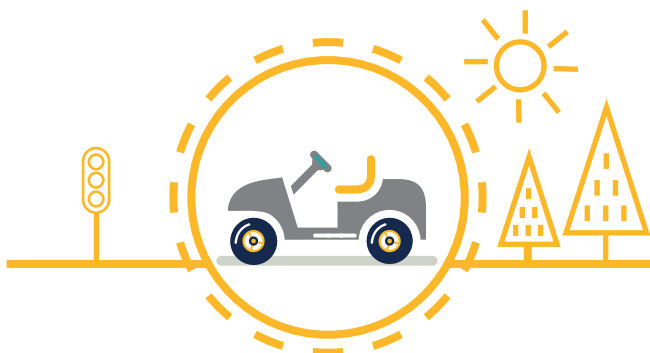
It is important to note that the manufacturer may define the intended use incorrectly. In such cases, it is up to the market surveillance authority to determine the correct primary intended use. Regulation (EU) No 168/2013 does not apply to all vehicles. Vehicles outside its scope are listed in Article 2.



The Regulation does not apply to vehicles without seat neither two-wheeled vehicles with seating position height ≤ 440 mm or to vehicles with three or more wheels and seating position height ≤ 300 mm.



The Regulation does not apply to pedal cycles with pedal assistance which are equipped with an auxiliary electric motor having a maximum continuous rated power of less than or equal to 250 W, where the output of the motor is cut off when the cyclist stops pedalling and is otherwise progressively reduced and finally cut off before the vehicle speed reaches 25 km/h (e.g. bicycles and pedicabs).



Compliant vehicle manufacturers also have a **type-approval certificate** for an approved vehicle type, and **each vehicle** must be accompanied by a **certificate of conformity (CoC)** issued by the manufacturer. The manufacturer must draw up the certificate using a specific template.

Before purchasing an L-category vehicle that you intend to use on **public roads**, make sure it meets the requirements of Regulation (EU) No 168/2013.



Ask the national market surveillance authority how a "public road" is defined in your country. It can mean different things in different countries.

Checklist

for buying or importing electric vehicles intended for use on public roads:

- Check the vehicle's primary intended use from the manufacturer.
- Ask for pictures of the statutory plate.
- Ask for the vehicle identification number (VIN).
- Request a type-approval certificate.
- Request a certificate of conformity (CoC).
- Compare the vehicle information given by the retailer and the manufacturer.
- Turn to the market surveillance authority for help and ask if the vehicle meets all requirements.

Contact details for market surveillance authorities in EU countries can be found here:

<https://ec.europa.eu/docsroom/documents/34243>

